

cife



BATH ACADEMY

UNIVERSITY FOUNDATION PROGRAMME

YOUR ROUTE TO BRITISH UNIVERSITIES



www.bathacademy.co.uk www.universityfoundation.co.uk



ACCREDITATION

The BAC is an independent body which was established in 1984 'to improve and enhance the standards of independent further and higher educational institutions in the United Kingdom by the establishment of a system of accreditation'. It publishes a list of some 109 independent colleges which have been inspected and accredited.

Inspection summary

Bath Academy was first accredited by the British Accreditation Council for Independent Further and Higher Education in 1998 and recently received accreditation in April 2008.

BAC's inspectors reported on a very good or excellent level of provision in all of the areas assessed during the inspection. The College specialises in preparing students from overseas for higher education in the UK, and offers a well-planned academic programme, including intensive English language support for those who need it. The quality of teaching was very high, with good awareness of student needs. The College has excellent residential provision and very thorough pastoral support. Former students have an impressive record of gaining entry to a wide range of British universities.

Bath Academy was awarded re-accreditation in April 2008.

THE CITY OF BATH

Bath is an exquisite Georgian city situated in the South-West of England. With its fine architectural treasures and a rich diversity of museums, galleries, gardens and attractions, Bath has been designated a World Heritage Site by UNESCO.

It is a busy, successful university town with a thriving and vibrant community which has much to offer to students both socially and academically. There is a year-round variety of festival, theatre and musical events. Bath is a modern city with some of the best quality independent shops, and over 150 restaurants and cafés.

There are plenty of sporting and cultural activities available locally to balance the pressures of study, and the River Avon which flows through the city provides excellent walking, boating, fishing and cycling opportunities.

Bath is located only one and half hours from London by train and is well served by road and rail networks.

Bath Academy is housed in an elegant and spacious Georgian building, situated in the heart of the city, close to restaurants, banks and the shops which are only a few minutes' walk away.



THE COLLEGE

Location

Bath Academy occupies an attractive Georgian building in the centre of the city of Bath. It is close to restaurants, banks and the shops which are only a few minutes' walk away. The city reference library is also close to the college and students can study quietly there in their own time.

Bath is one of the most beautiful cities in England and it is the perfect place to study. It is dynamic, safe and secure and offers a wide range of cultural, recreational and entertainment facilities. It is a compact city and is easy to explore on foot with many international restaurants, excellent shopping centres set against a backdrop of historical sites, and architecturally interesting buildings.

The college facilities

- ✓ Well-proportioned classrooms
- ✓ Student common room
- ✓ Private study room
- ✓ Art room
- ✓ Computer room
- ✓ Internet access





YOUR ROUTE TO BRITISH UNIVERSITIES

The University Foundation Programme – UFP – is a full-time course, lasting one academic year, which offers students an alternative qualification for **entry to UK university degree courses**. UFP is equivalent to GCE A-Levels and International Baccalaureate – IB.

Established in 1989, UFP was the UK's first independent foundation programme. Today, UFP is recognised as the leading foundation programme in the country. Our team has a wealth of experience in preparing students for entry into the British university system, and we have excellent relationships with many UK and international universities.

UFP is a modular course which allows students entry onto nearly all degree courses. The modular structure provides students with greater flexibility than is offered by other foundation programmes, which is particularly useful for students who are initially unsure about their choice of university or degree course.

WHO IS UFP FOR?

UFP is designed for students who wish to enter a British university, and who do not wish to take GCE A-Levels. The majority of UFP students are international students who have finished high school in their own country. These students may have excelled in their own country's educational system, but their qualifications are not recognised in Britain. UFP offers such students a faster route into British universities than A-Levels (which normally take two years), while at the same time broadening their knowledge, developing their study skills, and providing them with a sound academic base for degree-level education.

However we do accept UK students with good GCSE grades or students who have attempted A-Levels but did not achieve the grades required to enter the university course of their choice.

We also recommend UFP to students who have stopped at Certificate level on the International Baccalaureate – IB.

Independence

UFP is independent of any particular university, therefore UFP students are free to apply to any university of their choice.

Guarantee

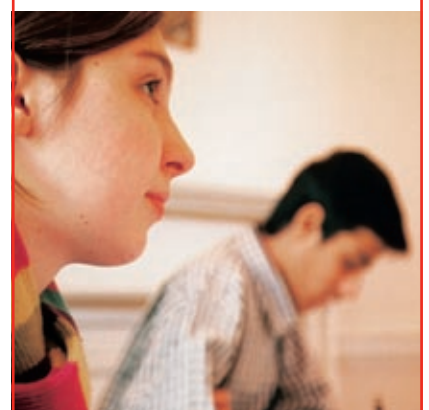
Students who successfully complete UFP are guaranteed a place at a UK university. IELTS (or equivalent) also required.

Excellence

UFP offers an exceptional standard of education; consequently UFP students can easily make the transition to degree-level education.

Advantages of UFP

- ✓ **Takes one academic year, instead of the two years required for A-Levels**
- ✓ **Continuous assessment through term by term tests, instead of end-of-year examination pressure as with A-Levels**
- ✓ **Start September or January to enter university the following September**
- ✓ **Flexibility for students who are initially uncertain about their degree course**
- ✓ **Development of research and practical skills relevant to many degree courses**
- ✓ **Focus on subjects related to future degree course**
- ✓ **Development of study and communication skills**
- ✓ **Opportunity to acquire and apply IT skills**



COURSE STRUCTURE

UFP has two start dates per year

- ✓ September to June
- ✓ January to August

The UFP academic year is designed so that all students are ready to commence their university degree the following September.

Students study 6 modules in total, which are spread over the duration of the course in order to provide an even workload.

- ✓ 3 Minor Modules in pre-determined subjects
- ✓ 3 Major Modules relevant to the student's future degree programme. Students choose which three major modules they wish to study

Minor modules

Mathematics*

Both Pure Maths and Statistics are studied.

Information Technology (IT)

Students learn to use word processing programmes, spreadsheets and databases.

Communication Skills/IELTS

Students develop study skills (such as effective reading methods and essay writing) and oral communication skills (such as public speaking and group discussion).

These 3 modules are compulsory for all students. The subjects have been identified as providing a fundamental background to any academic work at university level.

The courses in Mathematics and IT equip the student with essential skills in numeracy and computing, and the Communication Skills/IELTS course prepares the student for the demands of a degree course by building their skills in research, report writing and presentation.



Artem Gorbunov

Business & Management
Oxford Brookes



Felicity Li Kyaw

Economics, Finance & Management
Queen Mary, London



Alvin Lu

Mathematics & Business Management
Birmingham

Major modules

Students choose 3 major modules, which are relevant to their intended degree course.

- ✓ Accounting
- ✓ Art
- ✓ Biology
- ✓ Business Organisation
- ✓ Chemistry
- ✓ Computing
- ✓ Economics
- ✓ Further Mathematics
- ✓ History
- ✓ Law
- ✓ Media Studies
- ✓ Physics
- ✓ Politics
- ✓ Psychology



Accounting
Accounting & Economics
Accounting & Finance
Actuarial Science
Banking & International Finance
Business Administration
Business Economics
Business Management
Business Finance
Business IT
Business Studies
Business Studies & Marketing
e-Commerce
Economics
Economics & Accountancy
Economics & Finance
Hotel Management
Investment & Financial Risk
Leisure Marketing
Management Info Systems
Management & Marketing
Management
Money, Banking & Finance
Marketing
Property Valuation & Finance
Risk Analysis & Insurance
Tourism

UFP > BUSINESS AND FINANCE

In an increasingly competitive business world, having the right qualifications is vital for a successful career. UFP offers you an unparalleled opportunity to join the UK'S leading Business schools.

The business modules on the UFP provide an excellent preparation for a demanding and challenging university degree course.

UFP is a widely accepted entry qualification to the best Business and Finance courses at universities in the UK, including London, Nottingham, Manchester, Bristol and City University.

Major modules for Business and Finance

- ✓ Accounting
- ✓ Business Organisation
- ✓ Further Mathematics
- ✓ Economics



Baboucarr Sanyang

Industrial Pharmaceutical Science

John Moore, Liverpool



Cherry Pan

Economics

Manchester

Advertising
Anthropology
Business Law
Development Economics
European Studies
Estate Management
History
International Relations
International Relations & Journalism
Law
Law & Economics
Law & Politics
Mass Communication
Media Studies
Media & Cultural Studies
Philosophy
Politics
Politics & Economics
Politics & International Relations
Politics & Social Studies
Psychology
Sociology
Theatre Studies

UFP > LAW AND SOCIAL SCIENCE

Law, Psychology, Politics and International Relations have been popular degree choices for our UFP students over the last 10 years.

An increasing number of professionally minded students are opting for these subject areas and seeking career prospects on an international level.

UFP provides excellent preparation and a solid academic foundation for a successful outcome at degree level. In addition to enriching their academic background, students are provided with research, communication and study skills that are essential tools in the field of Law and Humanities. The academic strength of UFP has enabled UFP students to join top universities in Law and Social Science.

Major modules for Law and Social Science

- ✓ History
- ✓ Law
- ✓ Politics
- ✓ Psychology
- ✓ Media Studies



Locke Tran

Business Management

Bath



Malinga Peries

Medical Science

Newcastle



Tammy Li
Physiology and
Pharmacology
University College London



Robert Bo
Architecture
Nottingham



Ruby Hu
Business Management
Queen Mary, London



Molly Li
Economics and Politics
Queen Mary, London

UFP > ENGINEERING AND TECHNOLOGY

Students who are interested in studying Engineering or Technology related degrees usually choose major modules in Further Mathematics, Physics and Computing. These modules equip students with the required skills for top Engineering and Technology courses: advanced mathematical skills, a broad knowledge of advanced Physics, as well as practical skills and a diagnostic approach towards problem solving.

Most Engineering and Technology degree courses now involve a significant amount of computer programming, therefore UFP students always benefit from the IT skills gained on the course.

UFP students have progressed to a wide variety of Engineering and Technology degree courses which include Aerospace Engineering, Electronic Engineering, Software Engineering, Chemical and Mineral Engineering and Multimedia Technology at universities such as Southampton, Bath, Queen Mary's and King's College London.

Major modules for Engineering and Technology

- ✓ Computing
- ✓ Further Mathematics
- ✓ Physics
- ✓ Chemistry

NB: Art major module to be taken for Architecture.

UFP > SCIENCE

Students who study sciences on the UFP benefit from a programme of lectures providing a comprehensive theoretical background in all areas of Biology, Chemistry and Physics.

The set coursework enables students to gain considerable experience of scientific methodology, including design and implementation of experiments, statistical analysis and presentation, and formal report writing. The written assignments give students the opportunity to develop skills in the presentation of logical arguments about specific topics. All of these study skills will facilitate the student's transition to degree-level education in a science-related subject.

Former UFP students have gone on to study degrees in Biotechnology, Biochemistry, Genetics, Biochemical Engineering, Pharmacy and Basic Medical Sciences (which can lead to the study of a degree in Medicine).

Major modules related to Science

- ✓ Biology
- ✓ Chemistry
- ✓ Further Mathematics
- ✓ Physics

Aerospace Engineering
Architectural Engineering
Architecture
Automotive Engineering
Building Engineering
Building Surveying
Chemical Engineering
Civil Engineering
Computer Information Systems
Construction Management
Computer Science
Computer Systems Engineering
Electrical Engineering
Electronic Engineering
Engineering Management
Industrial Engineering
Information Systems Engineering
Mechanical Engineering
Mechatronics
Mineral Engineering
Multimedia Technology
Quantity Surveying
Software Engineering
Telecommunications Engineering

Biochemistry
Biological Sciences
Biomedical Science
Biotechnology
Criminology
Environmental Science
Genetics
Mathematics & Computer Science
Mathematics & Management
Mathematics
Mathematics & Statistics
Molecular Biology
Molecular Genetics
Nutrition
Occupational Therapy
Osteopathy
Pharmacology
Pharmacy
Physics
Polymer Science
Radiography
Statistics



PROGRESSION FROM UFP TO UNIVERSITY

All students applying to British universities must go through the Universities and Colleges Admission Service known as UCAS. The UFP Course Directors carefully assess each UFP student's academic record and future career ambitions before advising which universities and courses would be most suitable.

The UFP Course Tutor helps each student individually to complete their UCAS application form, and compiles a reference to accompany each UCAS application based on the student's performance on UFP.

Sep Start		Jan Start	
Nov	Stage 1: Directors assess students' academic records and advise them on the most suitable degree course and universities. Course Tutor compiles references for individual students and helps them to fill out UCAS application forms.	Feb	
Feb	Stage 2: Conditional offers for universities arrive one or two months after application. Each student selects their first choice 'firm' and their second choice 'insurance' of university after all offers have been received.	April	
Jun	Stage 3: Results are issued at the end of UFP and sent to 'firm' and 'insurance' universities.	Aug	
Jul	Stage 4: Students who meet the conditions set by their 'firm' university will be confirmed a place at their first choice university.	Stage 5: Students who do not meet the conditions set by their first choice university will go to their 'insurance' university, or go through 'clearing', where they will be able to go to another university, provided they have 1) passed UFP and 2) achieved at least 6.0 in IELTS.	Aug
Sep	UNIVERSITY		Sep

"Excellent success rate in university placement"

Universities that have accepted UFP since 1989

- ✓ Aberdeen University
- ✓ Aberystwyth University
- ✓ Aston University
- ✓ Bangor University
- ✓ Bath University
- ✓ Birmingham University
- ✓ Bournemouth University
- ✓ Bradford University
- ✓ Brighton University
- ✓ Bristol University
- ✓ Bristol, West of England University
- ✓ Brunel University
- ✓ Buckingham University
- ✓ Cardiff University
- ✓ City University
- ✓ Coventry University
- ✓ Cranfield University
- ✓ Durham University
- ✓ DeMontfort University
- ✓ East Anglia University
- ✓ Essex University
- ✓ Exeter University
- ✓ Glamorgan University
- ✓ Glasgow University
- ✓ Heriot-Watt University
- ✓ Hertfordshire University
- ✓ Hull University
- ✓ Keele University
- ✓ Kent University
- ✓ Kingston University
- ✓ Lampeter University
- ✓ Lancaster University
- ✓ Leeds University
- ✓ Leeds Metropolitan University
- ✓ Leicester University
- ✓ Liverpool John Moores University
- ✓ Liverpool University
- ✓ London Metropolitan University
- ✓ Loughborough University
- ✓ Luton University
- ✓ Manchester University
- ✓ Manchester Metropolitan University
- ✓ Newcastle University
- ✓ Northumbria University
- ✓ Nottingham University
- ✓ Nottingham Trent University
- ✓ Oxford Brookes University
- ✓ Plymouth University
- ✓ Portsmouth University
- ✓ Reading University
- ✓ Salford University
- ✓ Sheffield University
- ✓ Sheffield Hallam University
- ✓ Southampton University
- ✓ Stirling University
- ✓ Surrey University
- ✓ Sussex University
- ✓ Swansea University
- ✓ University of The Arts London
- ✓ Warwick University
- ✓ Westminster University
- ✓ Wolverhampton University
- ✓ York University
- ✓ **University of London:**
 - Goldsmiths
 - Imperial College
 - King's College
 - London School of Pharmacy
 - Queen Mary
 - Royal Holloway
 - University College

UFP students have also been accepted at universities in Australia, Canada and the USA.

ENGLISH LANGUAGE ON UFP

International English Language Testing System (IELTS)

IELTS is a globally recognised testing system of the English language, and it is a requirement of many British universities that overseas students have taken the IELTS examination (or another formally recognised English qualification). The points below illustrate how Bath Academy prepares students for the IELTS examination, in order for them to reach their potential and achieve a good IELTS score to support their university application.

- ✓ At the start of the course, each student sits an IELTS assessment test (of a similar format to the IELTS exam), in order to assess their level
- ✓ Students are placed in classes according to their ability needs
- ✓ Students work through a specific syllabus designed to meet their needs
- ✓ The syllabus aims to improve the student's ability in speaking, reading, writing and listening, as well as grammar and vocabulary
- ✓ The syllabus also includes specific techniques and approaches to the exam to improve students' performance
- ✓ Regular tests ensure that students are progressing towards the desired level for university entry
- ✓ All homework is assessed and graded according to the IELTS standards, which gives students a realistic indication of their performance

PRE-FOUNDATION COURSE

This course is, primarily, for students who have been studying Intensive English and have reached a suitably high level (at least IELTS 5.0) before the beginning of the September or January University Foundation Course at Bath Academy and wish to do some preparation in academic subjects while continuing to improve their English. It is also suitable for those who wish to take the University Foundation Programme at Bath Academy and have been studying English elsewhere.

- ✓ Courses run September – December (UFP start January), January – April (UFP start September), April – July (UFP start September)
- ✓ January – July course also available
- ✓ 3 hours General English each morning
- ✓ Selection of academic subjects in the afternoon

EUROCLASS 2008/2009

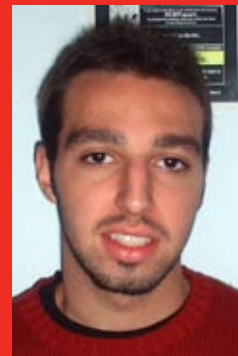
EUROCLASS is where a class of students (aged 16-19) from a school (or a group of schools) comes to Bath Academy for an extended period of time (one month, two months, a semester) with a teacher to follow their home school curriculum in English and to live in host families.

Students have lessons in English (language, literature, history and culture) and Mathematics in 'closed' groups. They then choose three other subjects from the University Foundation Programme. They are taught these lessons in the University Foundation Programme groups. The accompanying teachers may wish to teach another subject(s), for example, the students' native language.

The English and Mathematics courses follow the home school syllabi and efforts are made in the University Foundation Programme classes to teach material relevant to the students' curriculum at home.

Regular homeworks and progress tests will also be given and reports and certificates issued at the end of the semester.

Euroclass is a useful addition to a student's cv, especially for employment and entry into universities in the UK and USA, and experience has proved that it can also be a very potent marketing tool for schools.



Name: Nader **Age:** 20
Home Country: Iran
Course: University Foundation Programme

"Bath is one of the best cities to live in. Bath Academy is a very good college. Everyone is very friendly here and the teachers are very helpful. I am very happy to be studying here. I am convinced that when I finish my course, my knowledge and my English will be very much improved."



Name: Emi **Age:** 18
Home Country: Japan
Course: University Foundation Course

"I decided to study at Bath Academy because the college offers a wide range of subjects. I would like to go on to do Architecture at university. There is a member of staff here who speaks Japanese and is willing to help us with any problems. The college is in the city centre which is very handy for shops and restaurants."



ACCOMMODATION

Bath Academy offers:

- ✓ Residential Accommodation (full board in term time)
- ✓ Homestay Accommodation (full board in term time)

Residential accommodation

Students who take advantage of residential accommodation are able to enjoy fully the corporate life of the college. Bath Academy has three student hostels:

- ✓ The Bathurst
- ✓ The Oxford
- ✓ The Cambridge

They are all within easy walking distance of the city centre, providing:

- ✓ Single or twin study bedrooms, some en-suite
- ✓ Wardrobe and desk
- ✓ Full-board facilities (term time), including breakfast, packed lunch and dinner
- ✓ Provision for private study
- ✓ Laundry facilities by arrangement
- ✓ Comfortable common room

Homestay accommodation

The college Accommodation Officer arranges accommodation in Bath with caring and responsible host families.

- ✓ Single or twin study bedrooms, some en-suite
- ✓ Wardrobe and desk
- ✓ Full-board facilities (term time)
- ✓ Laundry facilities by arrangement
- ✓ Executive homestay, providing a higher quality accommodation, available on request

Private accommodation

Mature students over 18, whose parents or guardians have given permission, may find their own accommodation in student flats or houses in Bath.

STUDENT WELFARE AND SUPPORT

Bath Academy is a friendly college for British and overseas students where every student is treated as an individual. The college offers a variety of services to help students cope with their everyday life in a new environment:

Airport transfer

Students can be met at the airport and taken to their accommodation.

First days at the college

When the students arrive at Bath Academy, they are introduced to their fellow students, personal tutors and other staff who can answer all their questions. Many of our staff have lived and worked overseas and are able to offer help and advice to students in their own languages.

Students are given a Welcome Pack with brief information about the city and suggestions about activities in the area. At the start of term, Bath Academy organises a tour of the city of Bath to help new students find their way round the city.

During their first days in the college, students are given information and guidance about local services and living in the UK.

Medical care

Students are registered with a local doctor.

Personal tutors

All students have a personal tutor with whom they are encouraged to discuss any problem of a personal or academic nature.

Sports and social programme

The college enjoys a lively Sports and Social Programme which includes football, basketball, discos, international evening, end of term parties and day trips to various cities in the UK.

CALENDAR FOR ACADEMIC YEAR 2008-2009

Autumn Term 2008

Wednesday	03 September	10.00 - 15:00	Registration Day
Thursday	04 September	09.30	Day trip for all new students
Friday	05 September	09.30 onwards	Welcome meeting for all new students
Monday	08 September	09.00	Classes commence
Monday – Fri	20 – 24 October inclusive		Half Term Holiday
Mon - Fri	01 – 05 December		College Examinations
Friday	05 December		End of Term

Spring Term 2009

Monday	05 January	09.00	Registration Day
Tuesday	06 January	09.00	Classes commence
Mon – Fri	16 - 20 February inclusive		Half Term Holiday
Mon – Fri	23 -27 March inclusive		College Examinations
Friday	27 March	17.00	End of Term

Summer Term 2009

Monday	20 April	09.00	Term commences
Mon – Fri	18 - 22 May inclusive		Half term Holiday
Friday	19 June	17.00	End of Term (except for January UFP)
Friday	24 July	17.00	End of Term for January UFP.

Public Holidays 2008-2009

25/26 December 2008	Christmas
Thursday 01 January 2009	New Year's Day
Friday 10 April 2009	Good Friday
Monday 13 April 2009	Easter Monday
Monday 04 May 2009	May Day
Monday 25 May 2009	Spring Bank Holiday
Monday 31 August 2009	Late Summer Holiday

PLEASE NOTE that English language courses start any Monday, continue without regard to academic term dates, and the only break for these courses is the two weeks of the annual Christmas/New Year period.

ACADEMIC TUITION FEES for courses commencing 1st June 2008.

Courses

A Level 2 year

1 subject	GBP 3200.00 per year
2 subjects	GBP 6000.00 per year
3 subjects	GBP 8700.00 per year
4 subjects	GBP 9700.00 per year

A Level 1.5 year

1 subject	GBP 5500.00 per year
2 subjects	GBP 10700.00 per year
3 subjects	GBP 15950.00 per year
4 A/S subjects	GBP 16950.00 per year

GCSE 1 year

5 core subjects	GBP 8700.00 per year
Individual subjects	GBP 1990.00 each per year

Pre-foundation programme

for the Autumn term	GBP 3000
for the Spring term	GBP 2500
for the Summer term	GBP 2500

University Foundation Programme Science supplement

GBP 7250.00 per year
GBP 300.00 per year

IELTS

GBP 3250.00 per year

Individual Tuition Extra Tuition shared 2- 4

GBP 36.00 per hour
GBP 22.00 per student per hour

Registration Fee (non refundable) Deposit

GBP 150.00 per course
GBP 500.00 per course

ACCOMMODATION FEES

College Residence Single Room	GBP 7970 per year
College Residence Shared Room	GBP 5750 per year
Host Family Single Room	GBP 4680 per year

All prices are in GB pounds sterling



University Foundation Programme Application Form

PLEASE AFFIX
YOUR
PHOTO HERE

PLEASE USE CAPITAL LETTERS

1. PERSONAL DETAILS

FAMILY NAME:		OTHER NAMES:	
GENDER:	MALE <input type="checkbox"/> FEMALE <input type="checkbox"/>		
DATE OF BIRTH: (DAY/MONTH/YEAR)	COUNTRY OF BIRTH:	NATIONALITY:	
ADDRESS:			
TELEPHONE: (INC STD CODE)		FAX: (INC STD CODE)	
EMAIL:			
NAME & ADDRESS OF PARENT/GUARDIAN:			
TELEPHONE: (INC STD CODE)		FAX: (INC STD CODE)	
NAME & ADDRESS OF AGENT (IF APPLICABLE):			
WHO IS RESPONSIBLE FOR YOUR FINANCE? <i>SELF / PARENT / SPONSOR</i> (DELETE WHERE NECESSARY) HOW? <i>BANK TRANSFER / CREDIT CARD / CASH / CHEQUE</i>			

2. DO YOU HAVE A UK RECOGNISED ENGLISH QUALIFICATION?

TOEFL: <input type="checkbox"/>	IELTS: <input type="checkbox"/>	CAMBRIDGE : <input type="checkbox"/>	OTHER: <input type="checkbox"/>
		FIRST CERTIFICATE	
DATE: _____	DATE: _____	DATE: _____	TITLE: _____
SCORE: _____	SCORE: _____	SCORE: _____	DATE: _____
			SCORE: _____

3. EXPECTED STARTING DATE OF UFP JAN / SEPT _____ (DELETE WHERE NECESSARY) YEAR _____

4. EXAMINATIONS TAKEN OR TO BE TAKEN (INCLUDE COPIES OF CERTIFICATES WHERE POSSIBLE)

DATE MONTH YEAR	EXAMINATION BOARD	SUBJECT	LEVEL	GRADE

5. SCHOOLS/COLLEGES ATTENDED SINCE AGE OF 14

NAME	ADDRESS	YEARS

6. DO YOU REQUIRE COLLEGE ACCOMMODATION?
(TICK WHERE APPROPRIATE)

SINGLE
ROOM *

SHARED
ROOM

FAMILY
HOMESTAY

NOT
REQUIRED

* Subject to availability

7. DO YOU REQUIRE AN AIRPORT TRANSFER? Yes / No

AIRPORT: BRISTOL ☐

HEATHROW ☐

8. INTENDED DEGREE COURSE:

GATWICK ☐

--

9. INTENDED CHOICE OF UNIVERSITY:

10. HOW DID YOU HEAR OF THIS COURSE?

--

I HEREBY CERTIFY THAT TO THE BEST OF MY KNOWLEDGE, ALL DETAILS GIVEN IN THIS FORM ARE CORRECT.

SIGNATURE:	DATE:
------------	-------

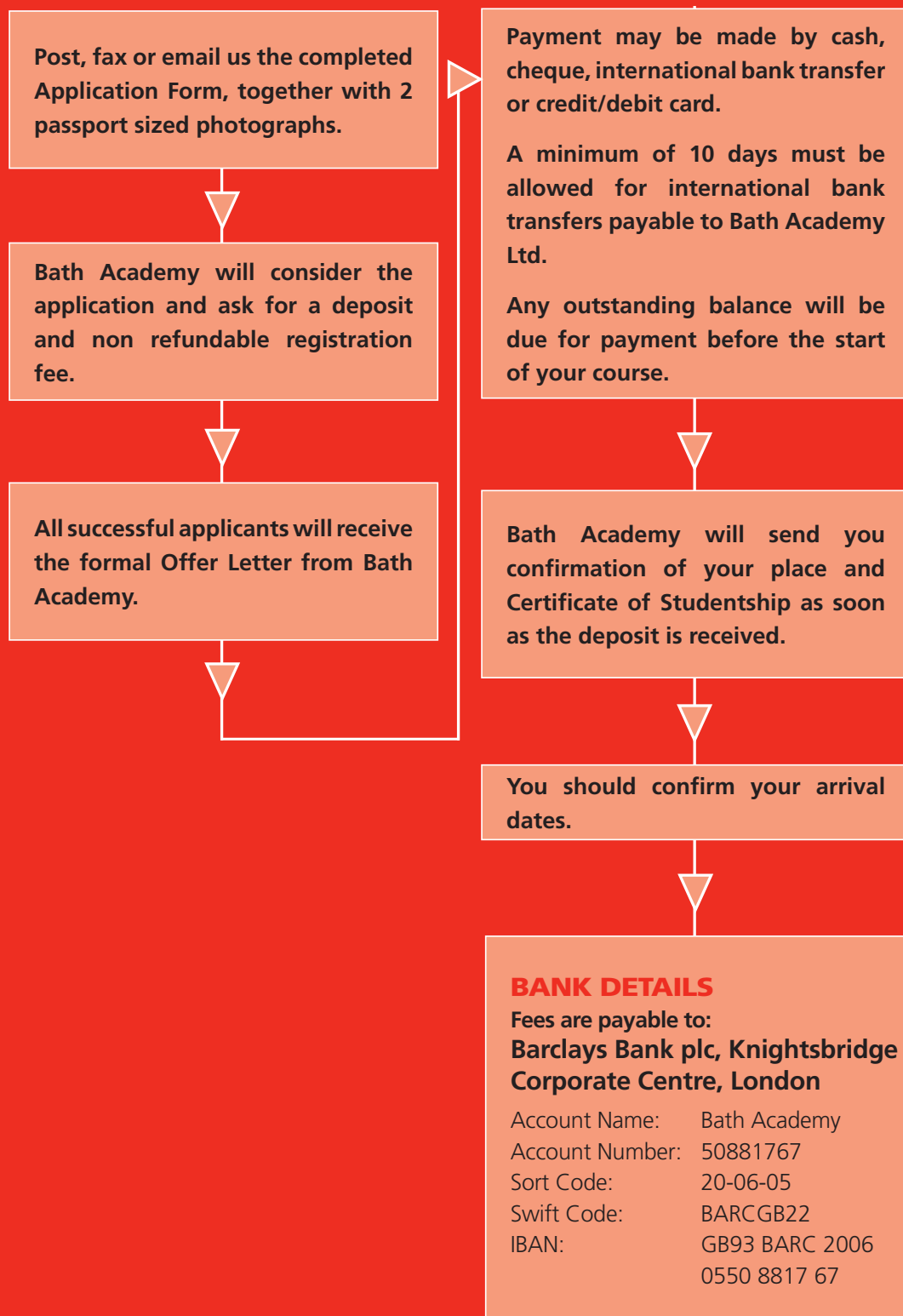
Please ensure that every section of this form is completed and return it to:

The Principal, Bath Academy, 27 Queen Square
Bath BA1 2HX
Tel: 01225 334577 Fax: 01225 482414
Email: principal@bathacademy.co.uk
www.bathacademy.co.uk

The College will consider your application. If the College then offers you a place and you decide to enrol, you must send written acceptance with the required deposit. The College will then issue your Letter of Acceptance.

ADMISSION PROCEDURE

How to apply



Terms and conditions

- Students are required to attend lectures, classes and to submit written work as required by the lecturers and tutors.
- The Principal reserves the right to expel a student if he or she does not fulfil the above requirements or for behaviour that is disruptive to the running of the College. Any fee refund is wholly at the discretion of the Principal.
- Enrolment on a course, together with the

- payment of the required fee, creates a binding agreement to follow the course and to pay the full fee. Fees must be paid in full before the commencement of the course or in two instalments during the year.
- In the event of cancellation for whatever reason, the following will apply: Notice of cancellation must be made in writing if a student has to withdraw from college. For long term students,

one term's notice is required in writing, or fees for one term will be charged in lieu of notice.

- Deposits are not refundable except where notification is received from the UK authorities that an overseas student has been refused entry.
- If students change their course of study during the term, no refunds will be given where the revised course involves fewer subjects.





cife



Bath Academy Ltd
27 Queen Square
Bath
BA1 2HX
UK

Tel: +44 (0)1225 334577
Fax: +44 (0)1225 482414
Email: principal@bathacademy.co.uk
www.bathacademy.co.uk
www.universityfoundation.co.uk

